

Connecting USB boards to an USB port (for Windows).

The Smartec evaluation boards SMTAS04USB, SMTAS08usbMINI and TOOLKITUSB are equipped with an interface chip that converts the RS232 code into an USB signal.

For the TOOLKITUSB and the SMTAS04USB:

A special USB interface driver has to be installed on the users PC. This driver can be found on the internet at the www of the interface chip supplier: <http://www.ftdichip.com/Drivers/FT232-T245/VCP/Win/R9052154.zip>

<http://www.ftdichip.com/FTDrivers.htm> (chip used = FT232, file R9052154).

Take the following steps to install:

- Download the driver from the FTDI website and save it in for example: My documents/FTdriver.
- Connect the SMTAS04usb or UTtoolKITUSB.
- Windows will ask for a new driver, which can be found at the location where you just saved it.
- The next time you connect an USB board that needs a FTDI driver Windows will remember the location of the driver.

For SMTAS08USBmini.

This ARM processor board needs a special USB driver. This driver can be downloaded from our website: http://www.smartec-sensors.com/cms/media/USB_Virtual_COM_Driver_Keil_5.zip. We advise you to place this driver in a special directory for easy installation.

Connect the SMTAS08USBmini to an USB port and find in the **Device manager** where the USB is located. On right mouse click **update drive** can be selected. Select the option and browse in the pc to the location of the driver software and click **OK**. The driver will be installed and after disconnect and connect the board the device will be pointed to a serial port.

You need to know to which COM port the USB port is connected, before you can choose the corresponding COM port in your Smartec software.

Take the following steps to detect the COM-port:

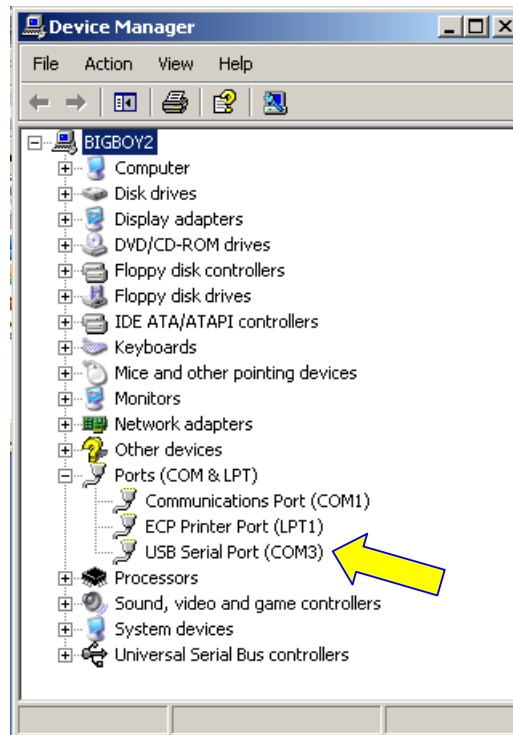
Go via **Start** to the **configuration** screen

Select **Device manager**

Go to **PORTS (COM & LPT)**

Find there the comport that's connected to the USB board. For Logsmart, Putty or Labview application select that port in the appropriate program.

Connecting Smartec USB boards to PC



You can see that (in this example) the USB port is connected to the COM3 port. When you remove the USB board, this item will be removed from this list by Windows. Remember to have a look here, if your USB board does not respond. Multiple USB boards will be connected to different COM ports. The COMport has to be selected when using our labview applications (see **notes** on our notes.smartec-sensors.com)

A bug in Windows 7

When you connect the USB board to the com port you have to look to the “device manger” from the control board.

You can find under “Mice and other pointing devices” maybe the “Microsoft serial Ballpoint”. It pops up when connecting the USB board

Disable this (not remove) Ball Point and plug in again the USB board.

Then probably your will find under “Mice and other pointing devices” the disabled “Microsoft Ballpoint” and under comports what you are looking for.

Try again then; this happens at our clients several times.

It is a bug in windows and has cost us also about 4 days to find out.

